



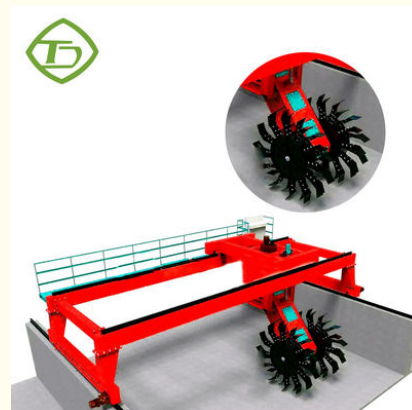
Chicken Manure Commercial Compost Turner Fertilizer Compost Turning Equipment

Our Product Introduction

for more products please visit us on organicfertilizerequipment.com

Basic Information

- Place of Origin: China
- Brand Name: TONGDA
- Certification: CE, ISO
- Model Number: TDLPPD-20000
- Minimum Order Quantity: 1
- Packaging Details: According to customer requirements
- Delivery Time: 5-10 days
- Payment Terms: L/C, D/A, D/P, T/T, Western Union, MoneyGram
- Supply Ability: 100 units per month

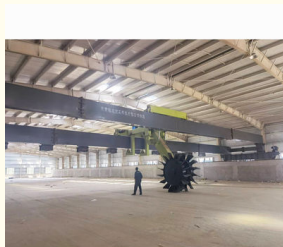
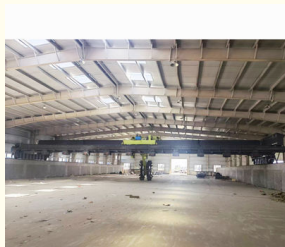


Product Specification

- Product Name: Wheel Type Compost Turner
- Raw Material: Organic Manure
- Turning Power: 22kw*2
- Turning Tooth Thickness: 8mm
- Application: Fertilizer Fermentation Turning Equipment
- Working Speed: 30-90m³/h
- Highlight: **Chicken Manure Commercial Compost Turner, Fertilizer Compost Turning Equipment, Manure Compost Turning Equipment**



More Images



Product Description

Chicken Manure Fermentation Organic Manure Compost Fertilizer Fermentation Machine

The large wheel type compost turner is a new product of our company, which is suitable for pig, cattle, sheep, chicken and other livestock manure, sludge waste, sugar factory filter mud, residue cake and straw sawdust; It is widely used in organic fertilizer plants, compound fertilizer plants, sludge and garbage plants, horticultural farms, and bisporus cultivation plants for fermentation, decomposition and moisture removal. The wheel disc type dumper adopts an energy-saving transmission mechanism, which drives two large diameter dumper discs, symmetrically dumps, and can adjust speed to save energy consumption.

Model	Main Motor Power(kw)	Moving Motor Power(kw)	Trolley Motor Power(kw)	Turning Width(mm)	Turning Depth(mm)
TDLPFD-20000	45	5.5*2	2.2*4	20	1.5-2

The wheel type compost turner with a span of 12 meters is mainly used for the fermentation process of organic fertilizer production. It is an intensive product integrating overturning, stacking, oxygenation, crushing and mixing. It has the characteristics of wide working range and high degree of automation; The overall structure of the machine is reasonable, the whole machine has good rigidity, balanced force, concise, solid, safe and reliable performance, easy to control, strong applicability to the site, and the components are standard parts, which are easy to use and maintain.

The wheel type compost turner system of the wheel type dumper can automatically lift the dumper and ensure that the equipment can move without obstacles. In addition, the fully automatic electrical control system further ensures the convenient operation of the equipment, and different models can be customized.

Compared with the traditional trough compost turner, the wheel type dumper saves a lot of space, has a wide range of dumping, deep dumping depth, uniform dumping and high dumping efficiency. Henan Tongda Heavy Industry Science and Technology Co., Ltd. can get different products according to customers model, to provide customers with better service!



Introduction to wheel type compost turner machine:

The wheel disc tipping machine adopts the middle chain transmission mechanism to drive two large diameter tipping wheel discs for symmetrical tipping. There is no dead angle and adjustable speed shifting trolley. The left and right displacement can be achieved with low energy consumption. In the case of deep stacking of materials, the special energy-saving transmission mechanism uses less power to complete the high depth and large span turning operation. Its hydraulic lifting system can automatically lift the turntable to ensure that the equipment can move without obstacles. In addition, the supporting fully automatic electrical control system further ensures the convenient operation, safety and reliability of the equipment. The wheel dumper can be customized with different spans according to the width of fermentation tank.

FAQ:

Q1: Are you trading company or manufacturer?

A: We are factory.

Q2: How long is your delivery time?

A: Generally it is 7-10 days if the goods are in stock. Or it is 15-30 days if the goods are not in stock, it is according to quantity.

Q3: What is your payment method?

A: 30% of total prices should be paid by T/T as down payment; 70% balance payment should be paid by T/T before delivery.

Q4: How long is the warranty of your equipments? Does your company supply the spare parts?

A: The warranty period of fertilizer equipments is one year. And we will supply the spare parts for you at lowest cost.

Q5: If I need the complete fertilizer production line can you help us to build it?

A: Yes, we can help you set up a fertilizer production line and give you related professional advices as long as you need. We had already build many fertilizer production line projects in China & Oversea.



TONGDA HEAVY

Henan Tongda Heavy Industry Science And Technology Co., Ltd.



+8618538527111



admin@hntdfertilizermachine.com



organicfertilizerequipment.com

Xingyang Longgang Development Zone